

MINE SITE
ADMINISTRATION BUILDING

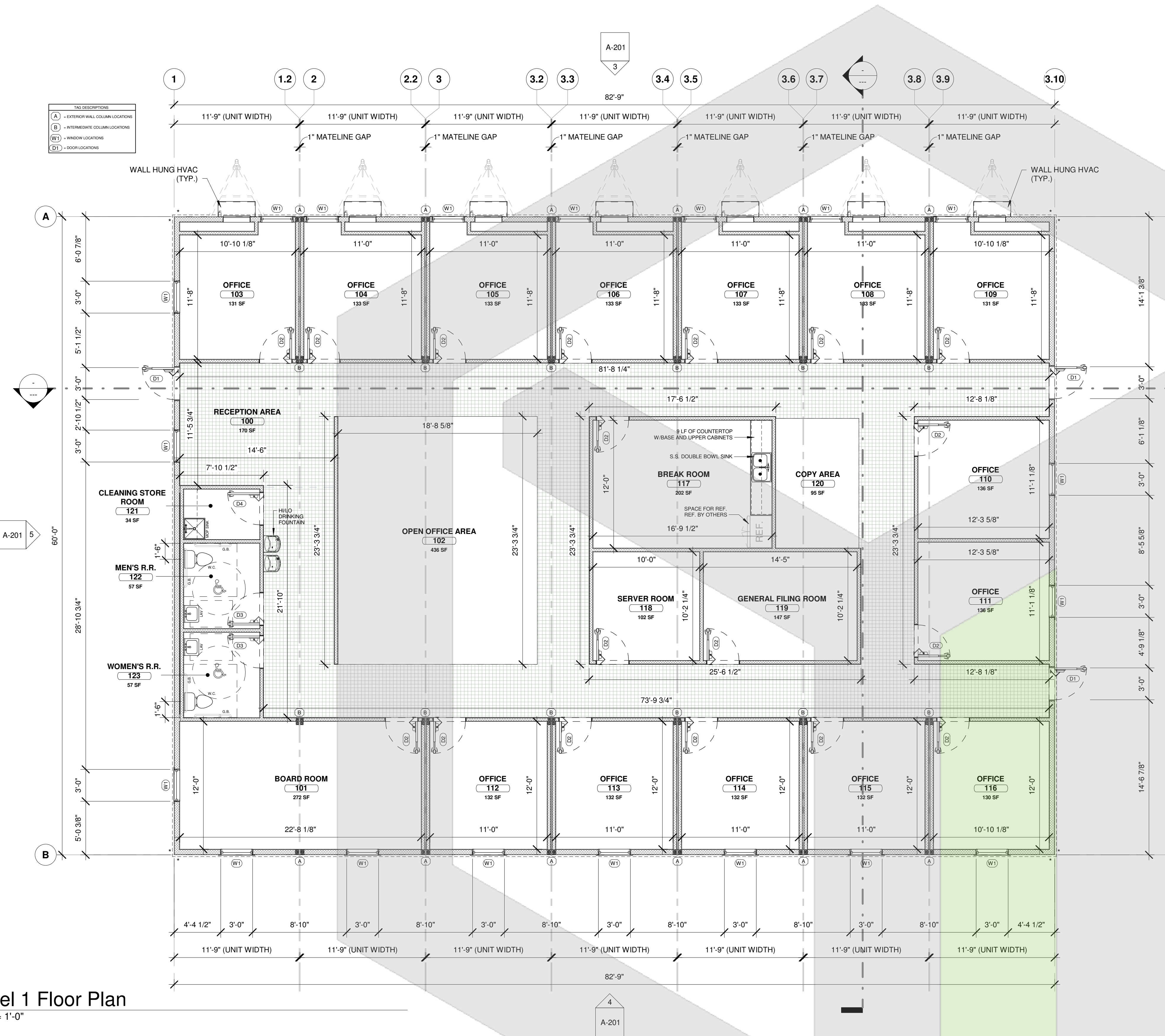
REV	DATE	DESCRIPTION

DRAWN BY: BLOK
DATE: 11/14/19

FLOOR PLAN

STATISTICS LEGEND (NET) - LEVEL 1			
SPACE NAME	ROOM #	AREA	Level
TOTAL GROSS AREA	---	4,965 SF	SF
RECEPTION AREA	100	170 SF	Level 1
BOARD ROOM	101	272 SF	Level 1
OPEN OFFICE AREA	102	436 SF	Level 1
OFFICE	103	131 SF	Level 1
OFFICE	104	133 SF	Level 1
OFFICE	105	133 SF	Level 1
OFFICE	106	133 SF	Level 1
OFFICE	107	133 SF	Level 1
OFFICE	108	133 SF	Level 1
OFFICE	109	131 SF	Level 1
OFFICE	110	136 SF	Level 1
OFFICE	111	136 SF	Level 1
OFFICE	112	132 SF	Level 1
OFFICE	113	132 SF	Level 1
OFFICE	114	132 SF	Level 1
OFFICE	115	132 SF	Level 1
OFFICE	116	130 SF	Level 1
BREAK ROOM	117	202 SF	Level 1
SERVER ROOM	118	102 SF	Level 1
GENERAL FILING ROOM	119	147 SF	Level 1
COPY AREA	120	95 SF	Level 1
CLEANING STORE ROOM	121	34 SF	Level 1
MEN'S R.R.	122	57 SF	Level 1
WOMEN'S R.R.	123	57 SF	Level 1

1 Level 1 Floor Plan
3/16" = 1'-0"



DOOR SCHEDULE																
MARK	QTY	DOOR DESCRIPTION	DOOR				FRAME			HARDWARE		ROUGH OPENING		ENVELOPE		COMMENTS
			WD	HGT	THK.	MATERIAL	FINISH	GLAZING	TYPE	FINISH	GROUP	WD	HGT	U-VALUE	LITE SHGC	
D1	3	36x80 EXTERIOR STEEL DOOR	3'-0"	7'-1"	0'-1 3/4"	METAL INSULATED	PAINT	1/4" TEMPERED	WELDED	PAINT		3'-4 1/4"	7'-2 1/8"	.37 DEFAULT	.40	6x30 VISION PANEL ENTRY DOOR
D2	18	36x80 INTERIOR WOOD DOOR	3'-0"	6'-8"	0'-1 3/4"	WOOD - SOLID CORE	EMBOSSSED	N/A	TIMELY			3'-1 1/4"	7'-1"			INTERIOR OFFICE DOOR
D3	2	36x80 INTERIOR WOOD DOOR	3'-0"	6'-8"	0'-1 3/4"	WOOD - SOLID CORE	EMBOSSSED	N/A	TIMELY			3'-1 1/4"	7'-1"			INTERIOR RESTROOM DOOR
D4	1	36x80 INTERIOR WOOD DOOR	3'-0"	6'-8"	0'-1 3/4"	WOOD - SOLID CORE	EMBOSSSED	N/A	TIMELY			3'-1 1/4"	7'-1"			INTERIOR STORAGE ROOM DOOR

WINDOW SCHEDULE															
TYPE MARK	QTY.	DESCRIPTION	MFR.	MODEL	GLAZING		SILL HGT.	HEAD HGT.	RO WD.	RO HGT.	U VALUE	SHGC	COMMENTS	WINDOW AREA	
					SIZE WD.	SIZE HGT.									
W1	19	36x60 VINYL FRAME - VERTICAL SLIDE			DUAL GLAZE LOW-E W/ARGON	3'-0"	5'-0"	3'-0"	8'-0"	37"	61"	.29	.40	PRE-PAINTED INTERIOR TRIM	16 SF