

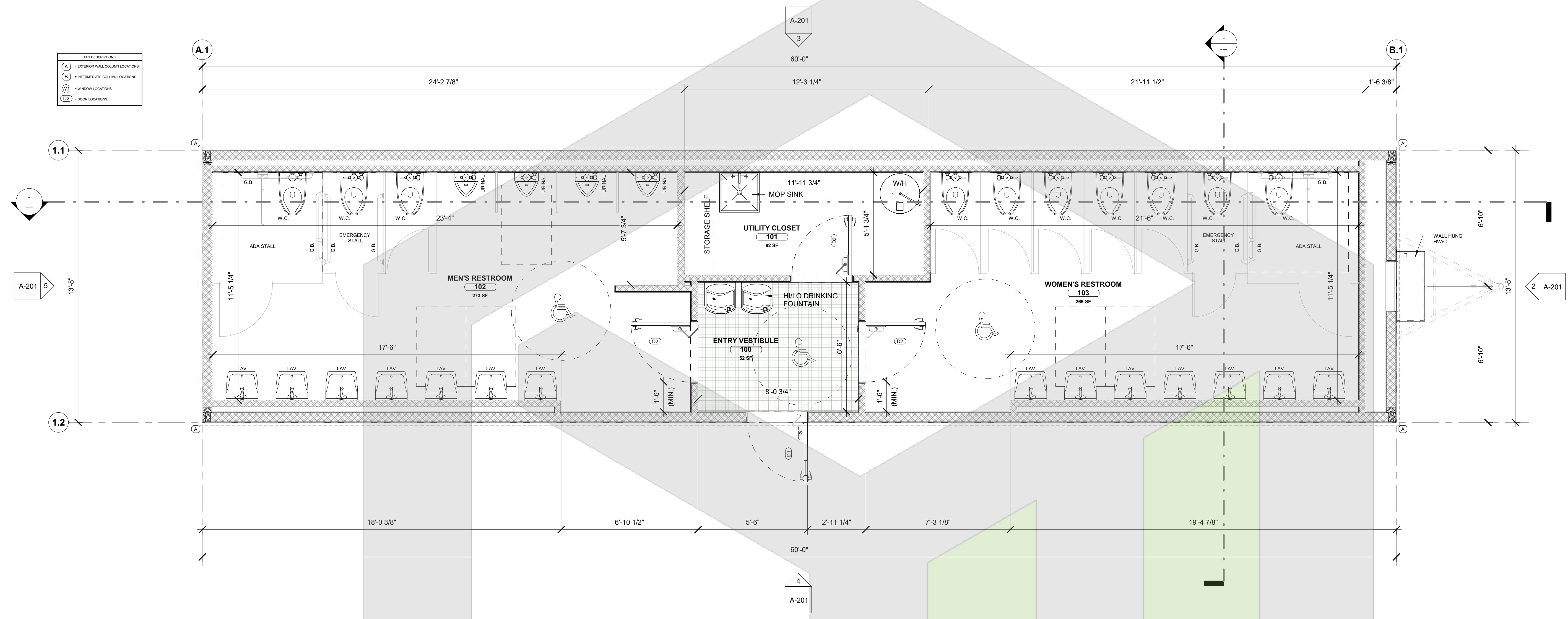
**14x60 RESTROOM BUILDING**  
**BLOK STANDARDS**

404 N. 2nd ST., STE. C  
UPLAND, CA. 91786

REV	DATE	DESCRIPTION

DRAWN BY: BLOK  
DATE: 02/03/20

**FLOOR PLAN**



**1 Level 1 Floor Plan**  
3/8" = 1'-0"

STATISTICS LEGEND (NET) - LEVEL 1			
SPACE NAME	ROOM #	AREA	Level
TOTAL GROSS AREA	---	820 SF	SF
ENTRY VESTIBULE	100	52 SF	Level 1
UTILITY CLOSET	101	62 SF	Level 1
MEN'S RESTROOM	102	273 SF	Level 1
WOMEN'S RESTROOM	103	269 SF	Level 1

DOOR SCHEDULE																
MARK	QTY	DOOR DESCRIPTION	WD	HGT	THK	DOOR MATERIAL	FINISH	GLAZING	FRAME TYPE	FINISH	HARDWARE GROUP	ROUGH OPENING WD	ROUGH OPENING HGT	ENVELOPE U-VALUE	ENVELOPE LITE SHGC	COMMENTS
D1	1	36x80 EXTERIOR STEEL DOOR	3'-0"	6'-8"	0'-1 3/4"	METAL INSULATED	PAINT	1/4" TEMPERED	WELDED	PAINT		3'-1 1/4"	7'-1"	.37 DEFAULT	.40	EXTERIOR ENTRY DOOR WITH 5x30 VISION PANEL
D2	2	36x80 INTERIOR WOOD DOOR	3'-0"	6'-8"	0'-1 3/4"	WOOD - SOLID CORE	EMBOSSSED	N/A	TIMELY			3'-1 1/4"	7'-1"	---	---	INTERIOR MULTI-USER RESTROOM DOOR
D3	1	36x80 INTERIOR WOOD DOOR	3'-0"	6'-8"	0'-1 3/4"	WOOD - SOLID CORE	EMBOSSSED	N/A	TIMELY			3'-1 1/4"	7'-1"	---	---	INTERIOR STORAGE DOOR

WINDOW SCHEDULE															
TYPE MARK	QTY.	DESCRIPTION	MFR.	MODEL	GLAZING	SIZE		SILL HGT.	HEAD HEIGHT	RO WD.	RO HGT.	U VALUE	SHGC	COMMENTS	WINDOW AREA
						WD.	HGT.								